



# IN-LINE LIQUID FILLER

## CVC 3036 Ser.



CVC 3036-4



CVC 3036-8

The CVC 3036 ser. linear type liquid filler is designed for bottle filling of general liquids widely used in pharmaceutical, nutraceutical, food, chemical and cosmetics industries.

- The CVC 3036 ser. liquid fillers can equip with 4, 8 and up to 12 volumetric pistons to reach max. fill speed of 80 bottles per minute, and they are very flexible to accommodate with customer's production requirement.
- Unique fill piston and nozzle designs are driven by servo system, which features fast and extremely high fill accuracy.
- The machine comes standard with a touch screen panel which allows operator to have simple and quick setup by storing and recalling product recipes.

- Unique tech mode setup, operator would never experience so friendly operation before.
- Error messages are instantly shown on the touch panel which features ease of the machine maintenance and troubleshooting.
- Available with multiple fillings at ones to achieve large fill volumes.
- Options include various sizes of volumetric pistons with fill volume capacity range from 20 ml up to 500 ml, shut-off nozzles, liquid buffer/storage tanks, 21 CFR PART 11 compliance, bottle neck holders, bottle feed screw.

# TECHNICAL SPECIFICATIONS

## Standard Features:

- 4 / 8 / 12 filling stations.
- Servo driven on both volumetric pistons and nozzles.
- Various speed settings of liquid filling.
- Diving type and bottom up filling features less foaming during filling.
- Drip tray.
- Capability of recipe storage.
- Simple and quick tech mode setup.
- Track full / track empty sensors.
- Bottle mouth holder design for special applications (require to conduct our factory test).
- Bottle feed screw for handling irregular shaped containers (option).
- Motorized single lane sanitary conveyor. customized conveyor lengths are available upon request.
- Stainless steel construction.
- Capacity: up to 72 bottles per minute (BPM) on a water like liquid filling of 100 ml bottle for CVC 3036-12.12 headed filler.
- ISO 9001 : 2015 certified.

## Product Specifications:

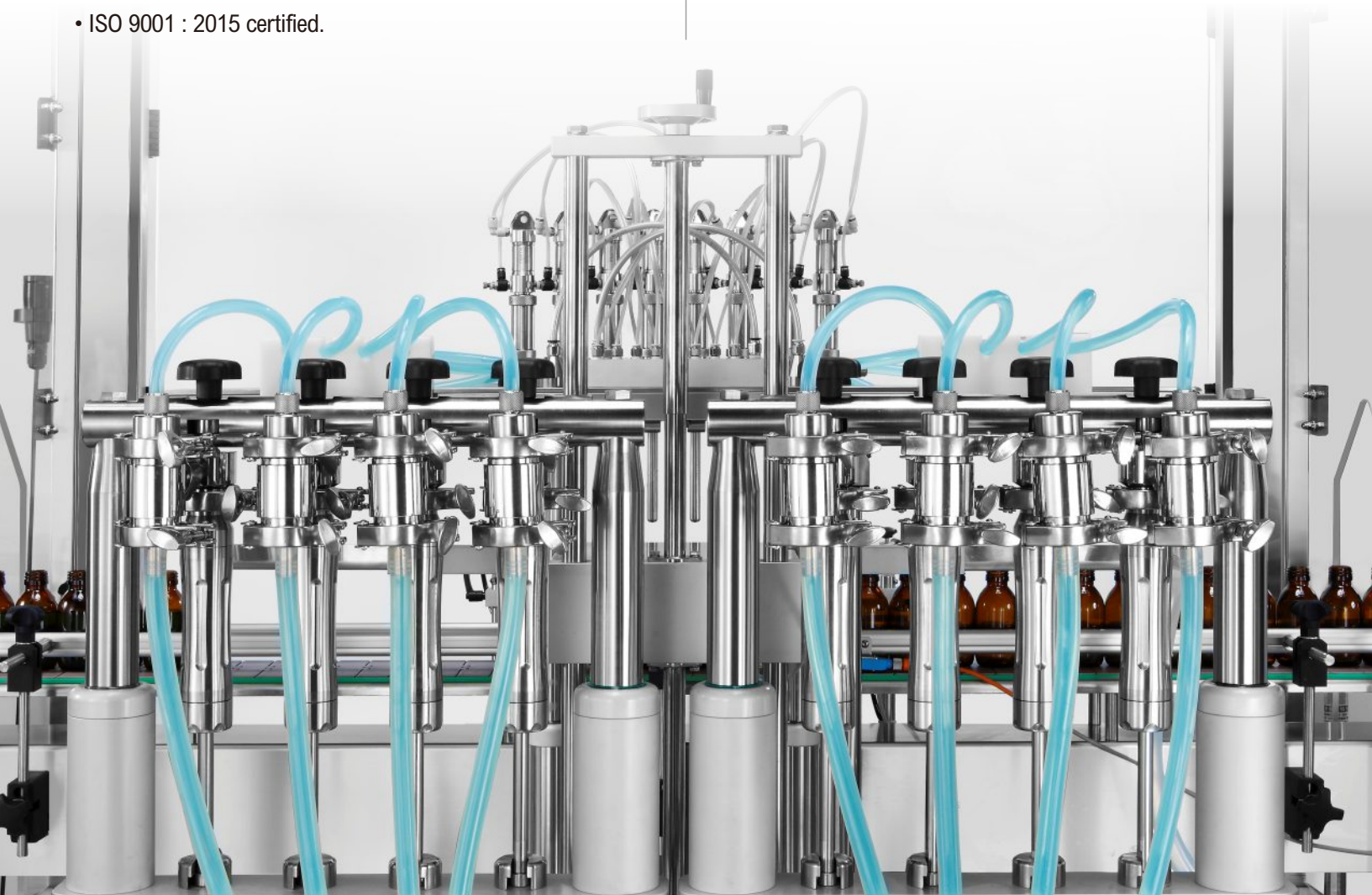
- Liquid viscosity: up to 1500 cps

## Container Specifications:

- Bottle height: 2" to 8.66" (50 mm to 220 mm)
- Bottle diameter / width: 1.18" to 3.94"  
(30 mm to 100 mm)
- Bottle opening:  $\varnothing$ 10 mm ~  $\varnothing$ 50 mm

## Machine Specifications:

- Food grade liquid contact materials
- Piston capacity: 50 ml / 100 ml / 250 ml / 500 ml / 750 ml
- Machine weight: CVC 3036-4: 1,367 lbs (620 kg)  
CVC 3036-8: 2,083 lbs (945 kg)  
CVC 3036-12: 2,227 lbs (1010 kg)



# TECHNICAL SPECIFICATIONS

## Machine Dimensions:

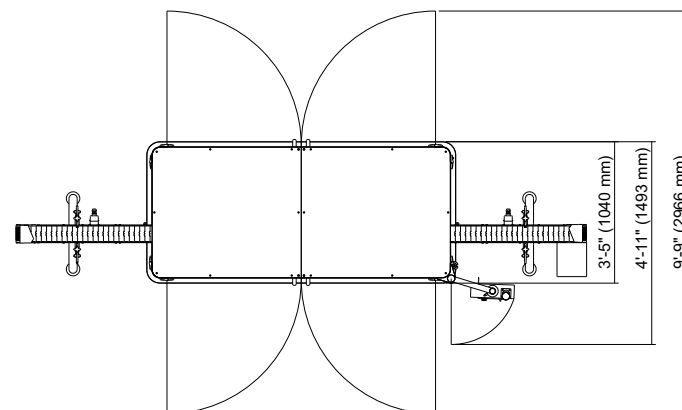
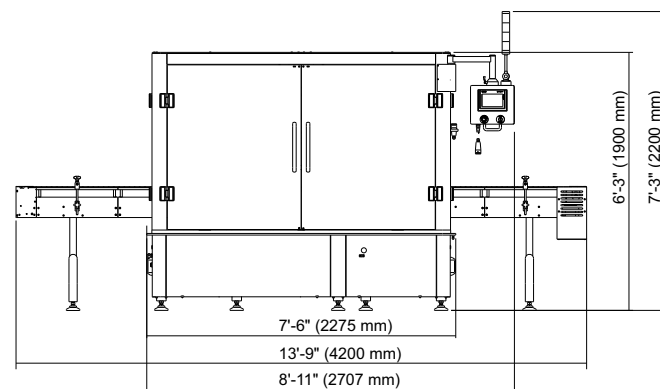
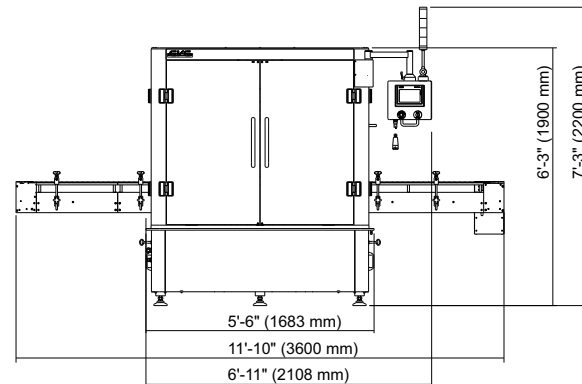
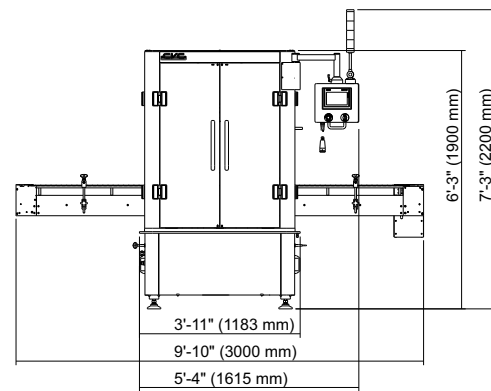
CVC 3036-4: L. 118-1/8" x W. 41" x H. 86-5/8"  
(L. 3000 mm x W. 1040 mm x H. 2200 mm)

CVC 3036-8: L. 141-3/4" x W. 41" x H. 86-5/8"  
(L. 3600 mm x W. 1040 mm x H. 2200 mm)

CVC 3036-12: L. 165-3/8" x W. 41" x H. 86-5/8"  
(L. 4200 mm x W. 1040 mm x H. 2200 mm)

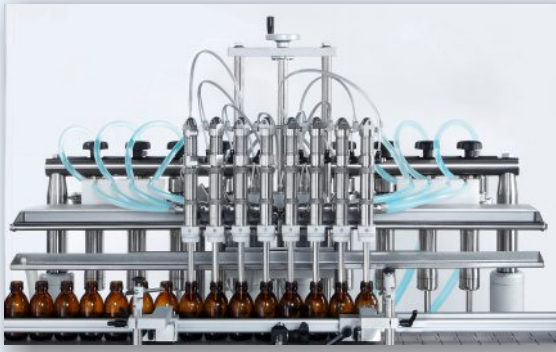
## Air / Electrical Requirements:

- Power source: 380 V, 50/60 Hz, 3 phase  
220 V, 50/60 Hz, single phase (USA)
- Power consumption: 3.1 KW - 6.1 KW
- Air pressure: 87 psi (ISO 8573-1)
- Air consumption: 1.6 - 1.95 cfm



The dimensions shown are for standard machine. The conveyor can be extended: the length may vary based on selected options. This machine can run independently or be integrated into an automated packaging line. All CVC equipment is covered by a one-year parts warranty. Full Warranty details are included in our equipment proposals or can be found on our website.

# SYSTEM INTRODUCTION



## Bottle Mouth Holders

The dedicated bottle holders are required when bottle mouth opening is too small to be centered and aligned with fill nozzles.



## Bottle Feed Screw

The customized feed screw is driven by a servo motor. Operator can easily make quick changeover. It takes only few minutes for the mechanical changeover and its related setting from the touch screen panel.



## Shut-Off Nozzles and drip Tray

Shut-off nozzles are strongly recommend for liquid with low viscosity.



## Contact Us

### USA

10861 Business Drive, Fontana, CA 92337  
Phone: +1 (909) 355-0311  
[www.cvctechnologies.com](http://www.cvctechnologies.com)  
[sales@cvcusa.com](mailto:sales@cvcusa.com)

### USA East Coast Office

1855 New Highway, Suite C, Farmingdale NY 11735  
[sales@cvcusa.com](mailto:sales@cvcusa.com)

### Taiwan-Asia Pacific Headquarters

Phone: +886 (4) 2496-3666  
[sales@cvctechnologies.com](mailto:sales@cvctechnologies.com)

### China/India/Indonesia

[sales@cvctechnologies.com](mailto:sales@cvctechnologies.com)