



Auxiliary Equipment - Capsule Inspection Machine

1. No need changeable tools (or Jig) according to the capsule shape & size
2. High efficiency lighting plate installed
3. Algorithm method scanning
4. 360° capsule self rotating & analyzing



Capsule Inspection Machine (VIM-100)

SPECIFICATION

Capacity: Up to 240,000 Capsule/Hr
 Oblong #20 -> 120,000 k/Hr
 Oval #10 -> 240,000 Capsule/Hr

Weight: Approx. 900 KG

Power Consumption: 1.5 kW

- Features:**
- 360° capsule self rotating & analyzing
 - Total 12 times scanning inspection per capsule by algorithm method
 - Easy defect model registration
 - Enable the utmost sorting ability in applying "Cross Distance Calculating Algorithm" (1.0mm³ cubical resolution power)
 - With applying the symmetry volume calculation algorithm, realized the highest precise sorting ability (Especially effectiveness for capsule size and deforming sorting ability)

Dimension: 2,591(L) x 992(W) x 2,234(H) mm



Deforming



Size



Bubble in capsule



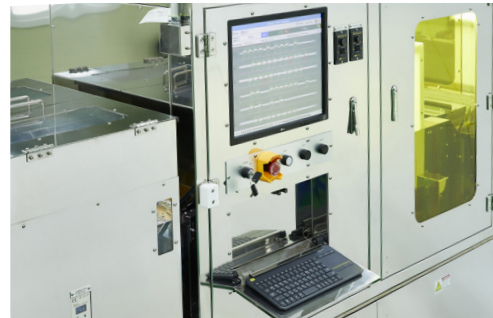
Spots



Color



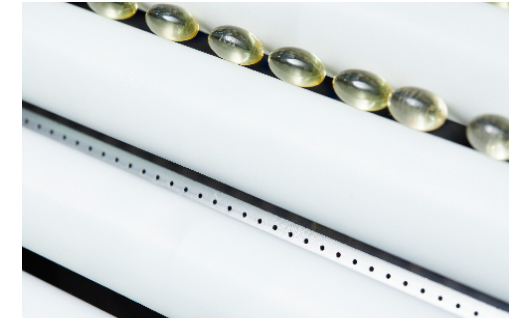
Damaged



Operation part



Roller conveyor



Capsule blowing air holes (2mm gap)